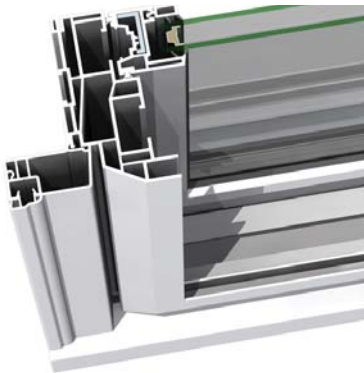


EASY SNAPTM Brickmould

Vinyl Window Replacement...that's a Snap!



Easy installation cuts install time and reduces labor costs.



Screw-through-the-face design provides for easy window installation.



2" contoured face and a 1" subsill (with 2" trim on all four sides available) gives the appearance of a traditional wood trim.

EasySnap: The Features You Need

- With a 2" contoured face and a 1" subsill, EasySnap gives the appearance of traditional wood trim.
- EasySnap provides a screw-through-the-face design for easy window installation.
- Easy installation cuts install time and reduces labor costs. Fusion-welded corners and multiple hollow chambers for watertight strength, structural integrity, and energy efficiency.
- Tough, durable vinyl that will not crack, chip, or peel.

*Window Replacement Is a Snap!**

- Remove old casing, jamb, and window.
- Simply install the new window by screwing through the face of the EasySnap Brickmould (caulk behind the brickmould). Then snap in the finishing cover which conceals installation screws.
- Replace interior jamb and casing, caulk exterior of window, and you're done!

**See reverse for a detailed installation guide.*

Available Colors



White



Tan



Adobe



Mocha



Earthtone



Champagne



Brick Red



Hunter Green



Bronze

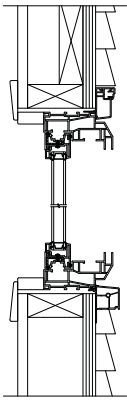
PARCO

Windows • Patio Doors

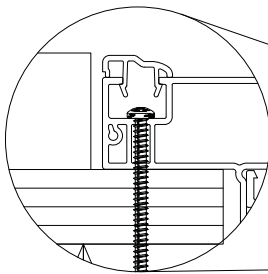
3819 White Avenue
Eau Claire, WI 54703

715.839.7888

www.ParcoWindows.com

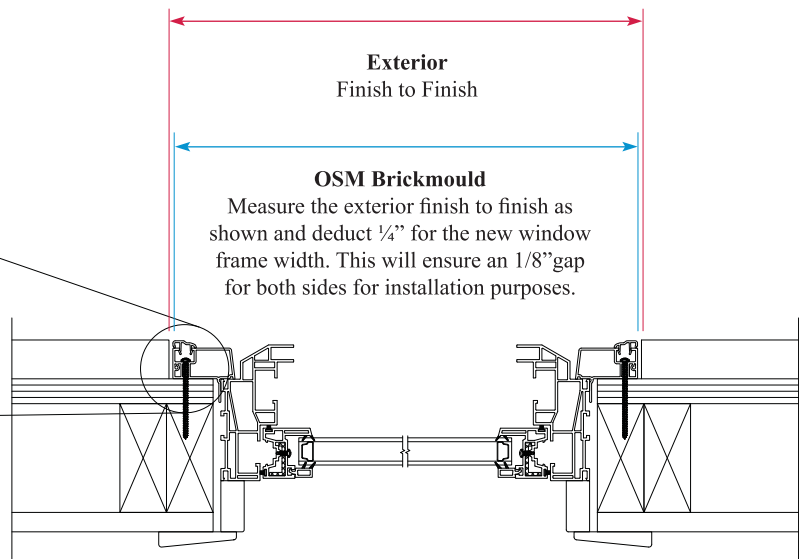


Welded corners with 1" sill nosing or four sided fully welded.



Window Replacement / Measuring Instructions

1. Measure exterior finish to finish on width and height. Measurements should be taken in at least three different points, using the smallest of the three dimensions.
2. Deduct 1/4" on the width to determine BM to BM measurement. (If using four sided fully welded deduct 1/4" width and height).
3. Deduct 1/8" on the height to determine BM to BM measurement. (We automatically deduct 1/4" to allow for the old slope sill on the height).



Notes

Exact Window Size will be 3-1/2" than the OSM Brickmould (side jams). Exact window size will be 3-1/8" less than the OSM Brickmould (head to subsill). Jamb depths in homes may vary. We suggest that you verify all openings.

BM to BM = Brickmould to Brickmould
OSM = Outside Measurement

Note: Not all replacement situations are the same. Some modifications may have to be made depending upon your installation situation.

General Installation Guide

1. Remove the existing window from the rough opening.
2. Remove the nail-fin that extends past the sub sill on the new window by scoring it with a utility knife several times and then bend at score line to remove. This nail-fin is left on to protect window during shipping.
3. Install the window in accordance with good practice and required building codes.
4. Shim window as required to support the window to ensure it is level, square and plumb.
5. Secure the window in place by using the 3" pan head screws through the brickmould as shown in the detail below. Use the groove as a guide for proper screw placement.
6. Snap the cover provided into place to cover screws. Trim as needed.
7. Caulk between the siding and brickmould.

NOTE: These are only installation guidelines. Please follow local building codes.



Windows • Patio Doors